



Beaver Dam

UNIFIED SCHOOL DISTRICT

Guiding students. Empowering futures.

LEADING THE WAY IN STUDENT
GROWTH AND ACHIEVEMENT

THANK YOU FOR YOUR SUPPORT!

BACKGROUND

The citizens in the Beaver Dam Unified School District approved a capital referendum project in the amount of \$107 Million dollars for the purpose of constructing a new middle school, renovations, additions and infrastructure improvements to Washington Elementary, as well as district-wide safety, security, new elementary playgrounds, ADA accessibility, and recreation and site improvements.



STAKEHOLDER FEEDBACK

In addition to our teams, there are multiple strategic efforts to engage key stakeholders in the design of our projects. In the case of the new middle school design, staff will have multiple opportunities to provide context, share feedback, and engage in conversations about layout, details, and other instructional programming needs. Additionally, our teams will be engaging students, families, and community members at different levels throughout the course of the projects. One such opportunity will be identified in the late winter/early spring to allow interested individuals to hear from our architects and share ideas, questions, and suggestions directly with leaders from PRA.



PROJECT TEAMS

CORE DECISION TEAM (CDT)

- District Level Administrators
- School Board Members (2)
- CG Schmidt, Construction Manager
- PRA, Architect Firm

The Core Decision Team meets regularly to review and act on project status, planning details, timelines, decision points, and other key actionable realities.

INSTRUCTIONAL / PROGRAMMING FEEDBACK TEAM

- Instructional Leaders & Principals
 - CDT Representatives
- They meet monthly during the winter and spring of 2025 to offer key context, recommendations, and insights.



www.bdusd.org



#BDFam

What will happen to the old middle school and when?

As part of the referendum project process, we are engaging community leaders regarding quality options for our district to consider regarding the current middle school. The board of education is committed to making sure the site doesn't contribute to blight in our community. Initial explorations into future uses and next steps are underway. We anticipate that our board will land on a plan forward and process details for this by April 2025.

KEY DATES & MILESTONES

- Community Input & Middle School Design (Winter/Spring 2025)
- Washington Elementary Phase 1: (Summer 2025)
- Playground Upgrades (JE & PV) (Summer 2025)
- ADA Accessibility Upgrades Part 1 (Summer 2025)
- Recreation & Site Improvements Part 1 (Summer 2025)
- Final Middle School Design & Bidding (Fall 2025)
- Middle School Groundbreaking (Fall 2025)
- Washington Elementary Phase 2: (Summer 2026)
- Parking Lot Safety & Improvements (Summer 2026)
- Campus Safety Enhancements / Fencing (Summer 2026)
- Playground Upgrades (LI & WA) (Summer 2026)
- Recreation & Site Improvements Part 2 (Summer 2026)
- Middle School Envelope Enclosed (Fall 2026)
- New Middle School Move In (Summer 2027)

FOR MORE INFO

CONTACT

Mark DiStefano, Superintendent
(920)885.7300 ext. 1001
distefanom@bdusd.org

Ryan Cashman, Director of Business Services
(920)885.7300 ext. 1100
cashmanr@bdusd.org

VISIT

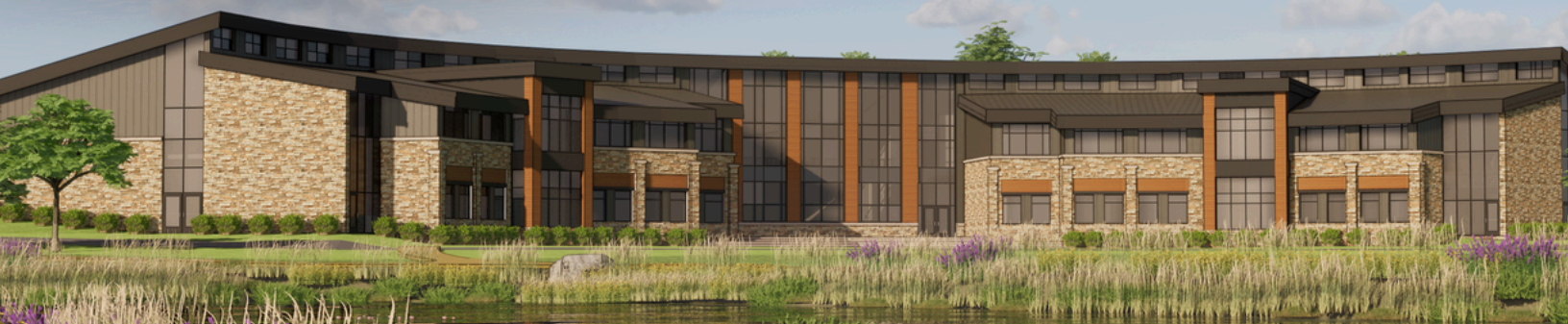
bdusd.org/referendum
Check out monthly project status updates and other informational items.

Scan to
Learn More



PROPOSED MIDDLE SCHOOL

Conceptual View From Hwy 151/Hwy G Exit Ramp



PROPOSED RENOVATIONS FOR WASHINGTON ELEMENTARY SCHOOL

Conceptual View From Entrance on Grove Street

